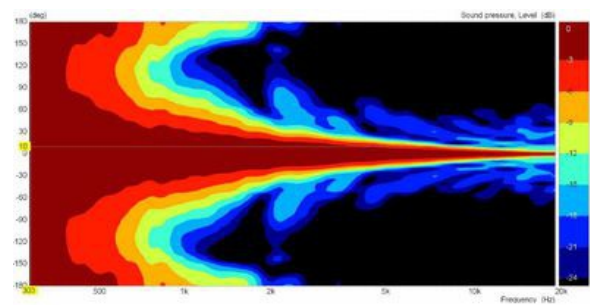
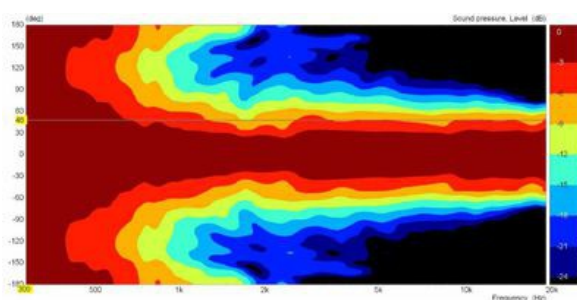


- Uniform on-axis and off-axis frequency response
- 90° x 20° horizontal and vertical constant coverage
- Very low distortion at high sound pressure
- High quality Aluminum structure
- Optimized heat dissipation

The XMT200 is a constant directivity 90x20 degree horn build and developed to reach the optimum performance when coupled to our Eighteen Sound AMT200P air motion transformer.

The XMT200 has been designed in order to reach smooth driver frequency response, to maintain constant coverage and directivity and eliminating the midrange narrowing and high frequency beaming problems common of many similar horns on the market.

The XMT200P horn maintains nominal 90° Horizontal x 20 Vertical pattern control. It provides consistent on-axis and off-axis frequency response from 600Hz to 18kHz in both horizontal and vertical planes. Horn directivity is constant down to 600 Hz.





# XMT200

Horns - 6.5 Inches

## SPECIFICATIONS

|                             |  |
|-----------------------------|--|
| Throat Diameter             | 167 mm (6.57 in)                               |
| Nominal Coverage Horizontal | 90 °   |
| Nominal Coverage Vertical   | 20 °   |
| Cutoff Frequency            | 0.6 kHz  |
| Material                    | Die-cast Aluminum                              |
| Design                      | Constant directivity                           |
| Dimensions                  | 236(W) x 230(H) x153(D) mm (9.29x9.06x6.02 in) |

## MOUNTING AND SHIPPING INFO

|                         |                                 |
|-------------------------|---------------------------------|
| Baffle Cutout Dimension | 200(W)x210(H) mm (7.87x8.27 in) |
| Net Weight              | 1.3 kg (2.87 lb)                |
| Shipping Weight         | 1.8 kg (3.97 lb)                |